

WEDDING VENUE

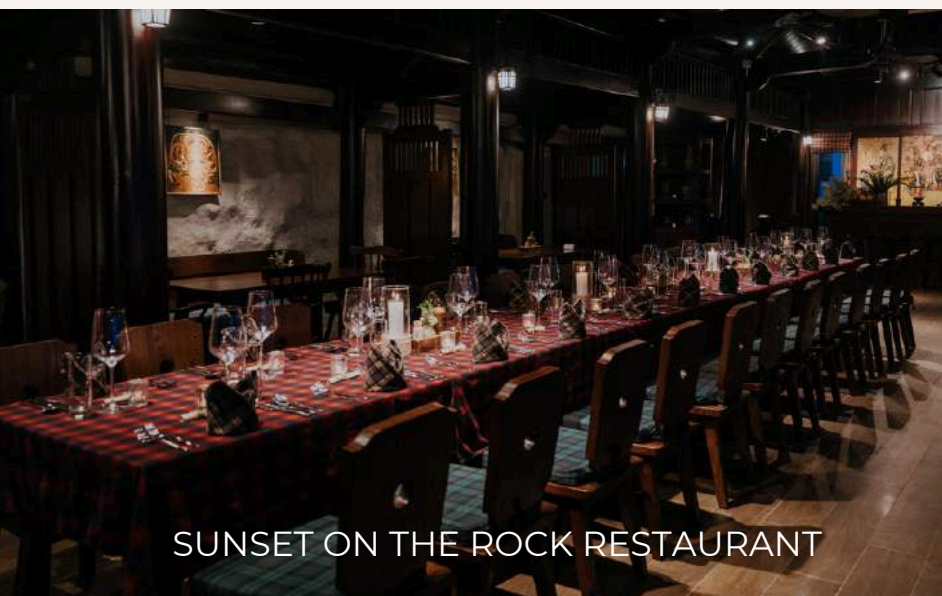


VILLE DE MONT



MOUNTAIN RESORT

DINING BY THE VAELY RESTAURANT



SUNSET ON THE ROCK RESTAURANT



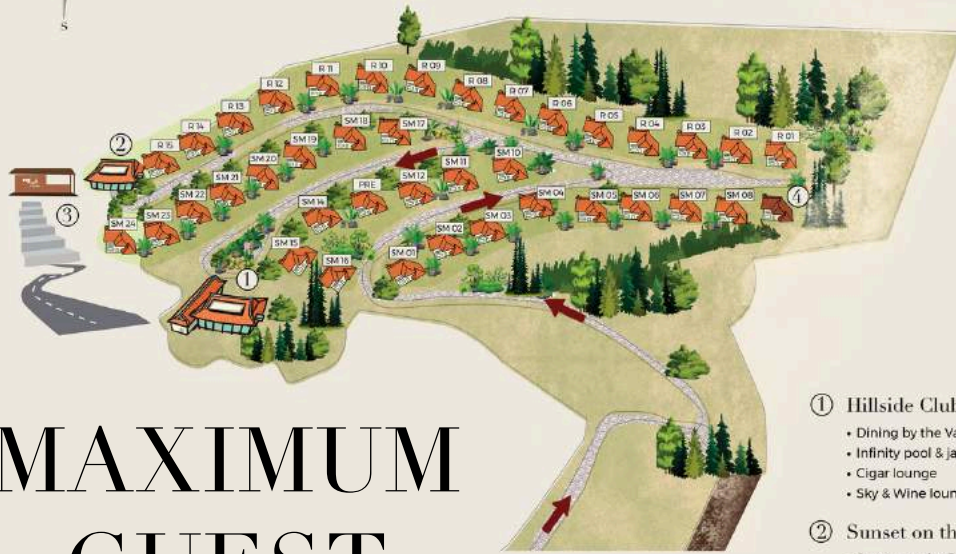
VILLA GARDEN



INFINITY POOL



TUS DE LIAB RESTAURANT



- ① Hillside Club
 - Dining by the Valley Restaurant
 - Infinity pool & jacuzzi
 - Cigar lounge
 - Sky & Wine lounge
- ② Sunset on the Rock
 - Sunset on the Rock Restaurant
 - Woody bar
- ③ Tus De Liab Restaurant & Coffee
- ④ Healing Forest Spa

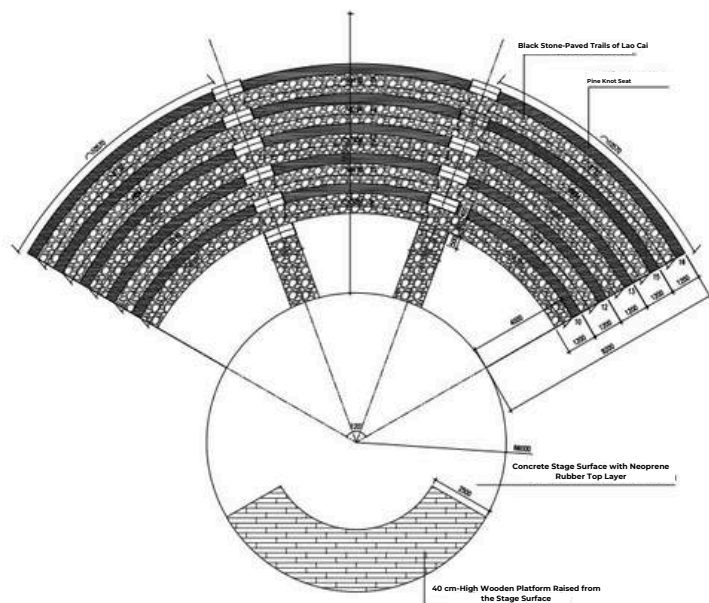
MAXIMUM GUEST CAPACITY FOR EACH VENUE

No.	Venue	Area	Maximum Guest Capacity	
			Wedding Ceremony	Wedding Reception
1	Tus De Liab Restaurant	350m2	80	80
2	Ville De Mont Infinity Pool	100m2	100	40
3	Dining by the Valley Restaurant	107m2	50	55
4	Sunset on the Rock (First Floor)	335m2	30	30
5	Sunset on the Rock (Second Floor)	330m2	65	60
6	Villa Garden (Courtyard Villa 7-8-9)	260m2	100	60
7	Villa Garden (Courtyard Villa 22-23)	190m2	50	30

TUS DE LIAB RESTAURANT



A circular stage area jutting out into the Muong Hoa Valley with a breathtaking view at an altitude of 1600m. The uneven surface features wooden platform layouts, a round concrete stage, and a stone-paved step area.



Wedding Ceremony (Round stage)	Wedding Ceremony (Stone steps)	Landing tread step	Total
40	60	32	132

Wedding Reception (Round stage)	Wedding Reception (Stone steps)	Landing tread step	Total
24	60	32	116

INFINITY POOL



Nestled beside Dining by the Valley restaurant, this spot boasts breathtaking views of the majestic terraced rice paddies.

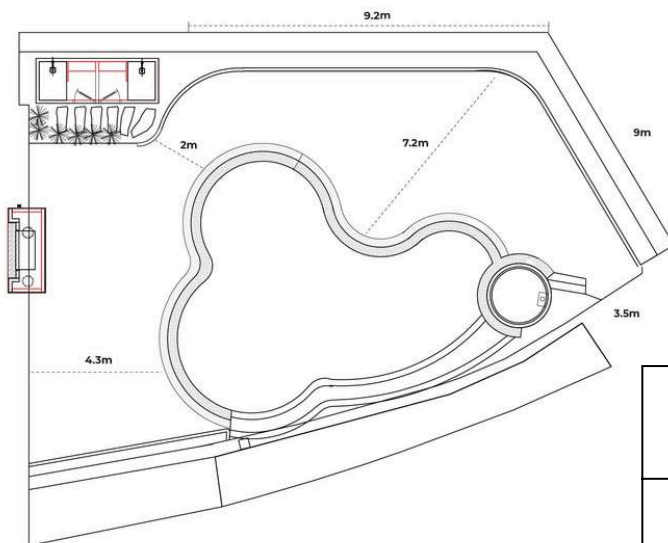


Table for 6 (Stage)	Long Table (Stage)	Both pool deck and wooden platform
60	60	100

DINING BY THE VALLEY RESTAURANT



Situated on the first floor of Hillside Club, the restaurant boasts a captivating view of the Muong Hoa Valley, complemented by the breathtaking Sky & Wine Lounge rooftop bar. The interior exudes warmth and ambiance, with a crackling wood-burning fireplace setting the scene for a truly special meal.

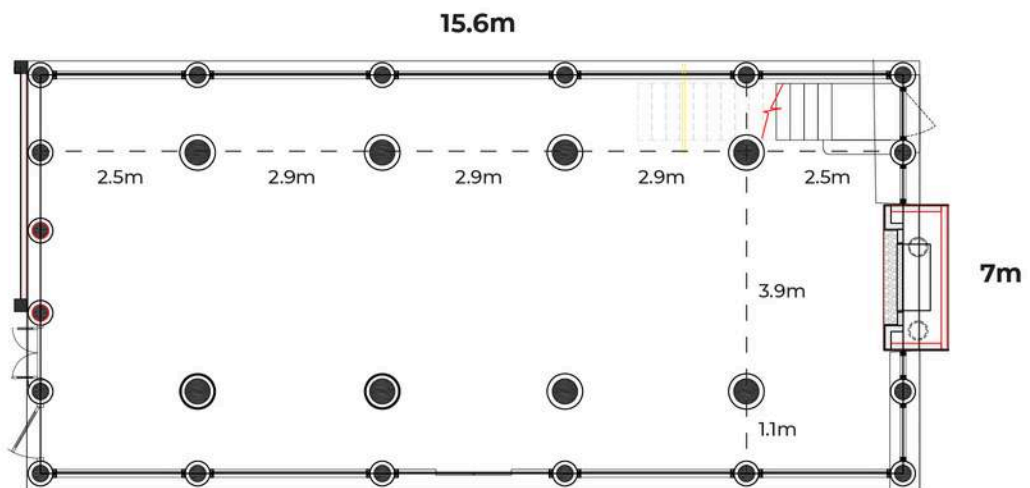
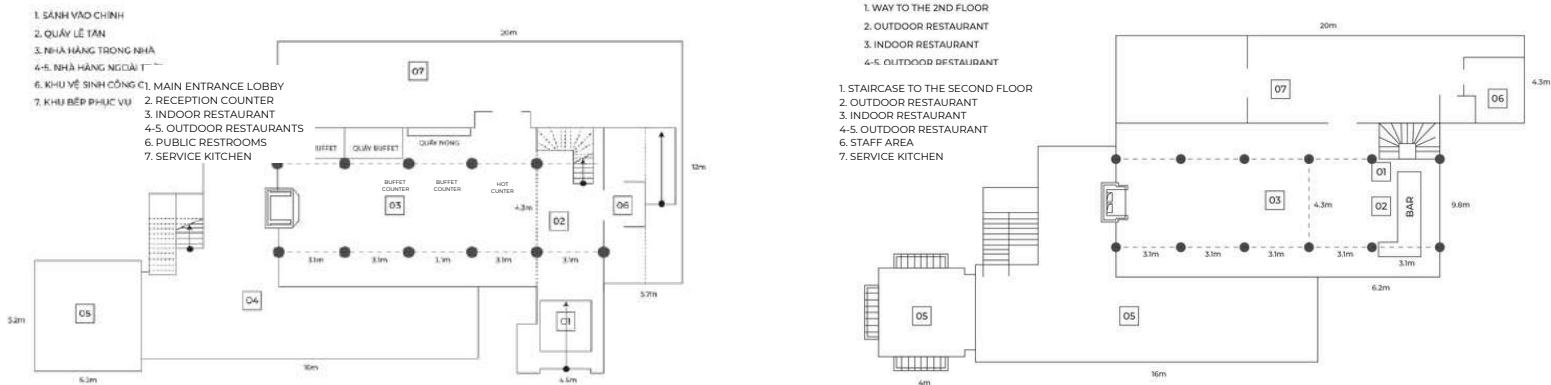


Table for 6 (Stage)	Long table (Stage)	Table for 6 (No stage)	Long table (No stage)
40	40	52	48

SUNSET ON THE ROCK RESTAURANT

Perched atop a hill, this restaurant provides an enchanting vantage point to witness the mesmerizing Sapa sunsets. With its sheltered indoor and patio spaces, it's an ideal setting for intimate wedding ceremonies and receptions of up to 30 guests.



Frist Floor	Second Floor	Outdoor area (1st floor)	Outdoor area (2nd floor)
60	40	20	20

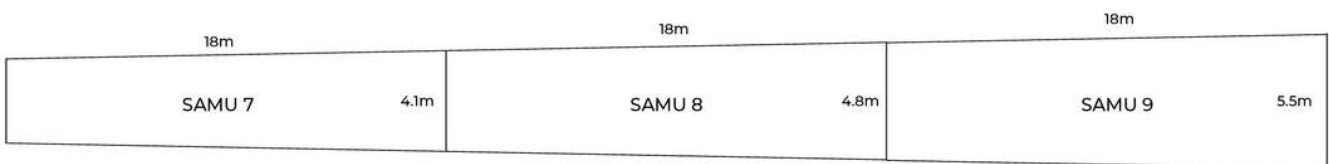


VILLA GARDEN

Nestled in front of the villa, the garden offers an enchanting view of the lush green pine forest, providing an intimate and secluded setting for private weddings. Guests can easily stroll from the villa to the ceremony location.

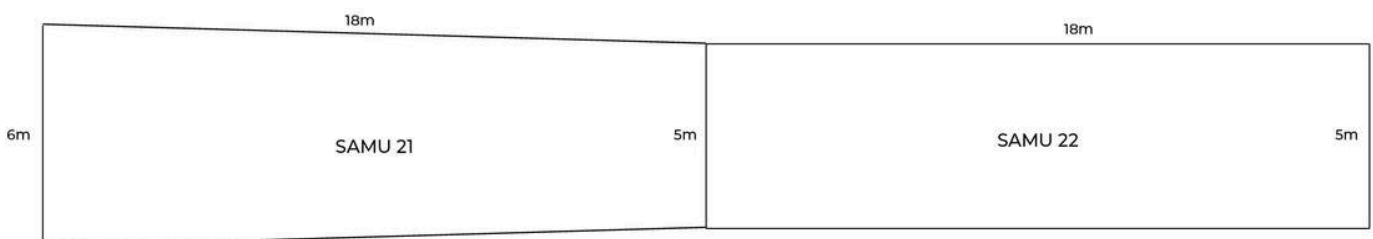
COURTYARD VILLA 7-8-9

U Shape (Stage)	Long Table (No stage)
60	80



COURTYARD VILLA 21-22

U Shape (Stage)	Long Table (No stage)
40	60



TABLES AND CHAIRS

DINING BY THE VALLEY RESTAURANT

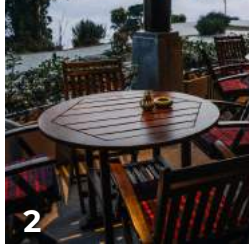


<i>List</i>	<i>Quantity</i>	<i>Size</i> (length*width*height)
<i>Chair</i>	56	45*45*45 cm
<i>Table (square)</i>	14	80*80*80 cm
<i>Table (rectangle)</i>	4	120*80*80 cm

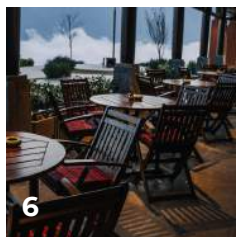


TABLES AND CHAIRS

SUNSET ON THE ROCK RESTAURANT



List	Quantity	Size (length*width*height)
Long table (1)	84	45*45*40 cm
Round table (2)	3	190*50*40 cm
Square table (3)	30	80*80*75 cm
Long table (4)	3	160*80*75 cm
Short table (5)	5	80*40*30 cm



List	Quantity	Size (length*width*height)
X chair (6)	48	40*40*40 cm
Bench (7)	12	90*75 cm
Mixed chair (8)	2	135*40*30 cm
Short bench (9)	2	70*70*30 cm
Bench (10)	2	225*70*30 cm



TABLES AND CHAIRS

OUTDOOR PARTY

<i>List</i>	<i>Quantity</i>	<i>Size</i> (length*width*height)
<i>Chair</i>	<i>130</i>	<i>40*40*40 cm</i>
<i>Table</i>	<i>80</i>	<i>60*60*70 cm</i>





TABLEWARE

VILLE DE MONT MOUNTAIN RESORT

Napkins



Plates and bowls

<i>List</i>	<i>Colour</i>	<i>Diameter</i>
<i>Bowl</i>	<i>jade green</i>	<i>12 cm</i>
		<i>14 cm</i>
<i>Plate</i>	<i>jade green</i>	<i>24 cm</i>
		<i>22 cm</i>
		<i>18 cm</i>
		<i>16 cm</i>
<i>Plate</i>	<i>white</i>	<i>24 cm</i>
		<i>22 cm</i>
		<i>16 cm</i>



SAPA JADE HILL RESORT & SPA

BARREL COFFEE & BAR



THE YARD CINEMA

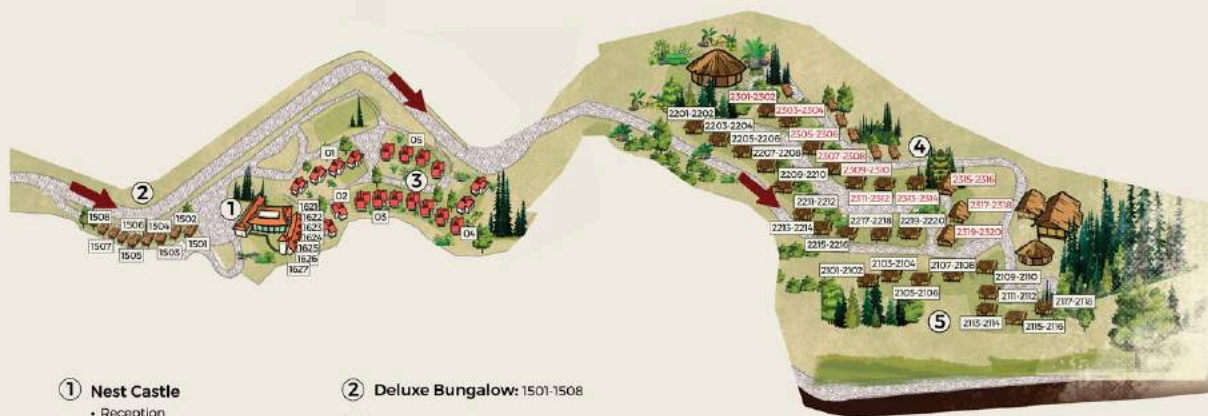


NOJ RESTAURANT



CHO QUE BBQ

Sapa Jade Hill Resort & Spa Directory SƠ ĐỒ KHU NGHỈ DƯỠNG



- ① **Nest Castle**
 - Reception
 - NOJ Restaurant
 - The Lub Conference Room
 - Cho Que BBQ
 - Huab Spa
 - BARrel Coffee
 - Tus Dej Pool & Gym
 - Kids Club
 - ② **Deluxe Bungalow:** 1501-1508
 - ③ **Nest Villa:** Nest Villa 01-05
 - ④ **Bungalow Mountain View:** 2301-2320
 - ⑤ **Bungalow Panorama View:** 2101-2118, 2201-2220
- Deluxe Valley View:** 1621-1627

MAXIMUM GUEST CAPACITY FOR EACH VENUE

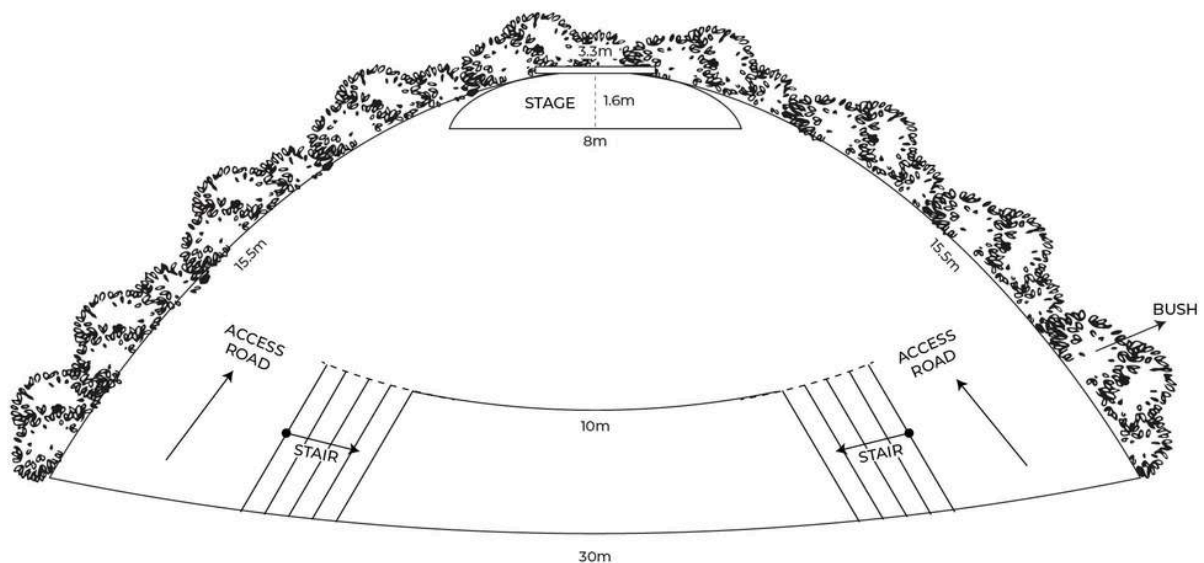
STT	Venue	Area	Maximum Guest Capacity	
			Wedding Ceremony	Wedding Reception
1	The Yard Cinema	250m ²	80	50
2	Barrel Coffee & Bar	80m ² 125m ² (skylight)	60	60
3	Cho Que BBQ	115,8m ²	80	60
4	NOJ Restaurant	185,4m ²	80	80



THE YARD CINEMA

Situated within the Nest Castle service area of Sapa Jade Hill Resort & Spa, The Yard Cinema beckons movie enthusiasts with its captivating panorama of Muong Hoa Valley and the charming Nest Villa.

Table for 6 (Stage)	Long table (Stage)
60	40





BARREL COFFEE & BAR

The private stone court at Nest Castle is located in the heart of the service area. The design boasts a unique European style with concentric stone flooring, perfect for special party layouts.

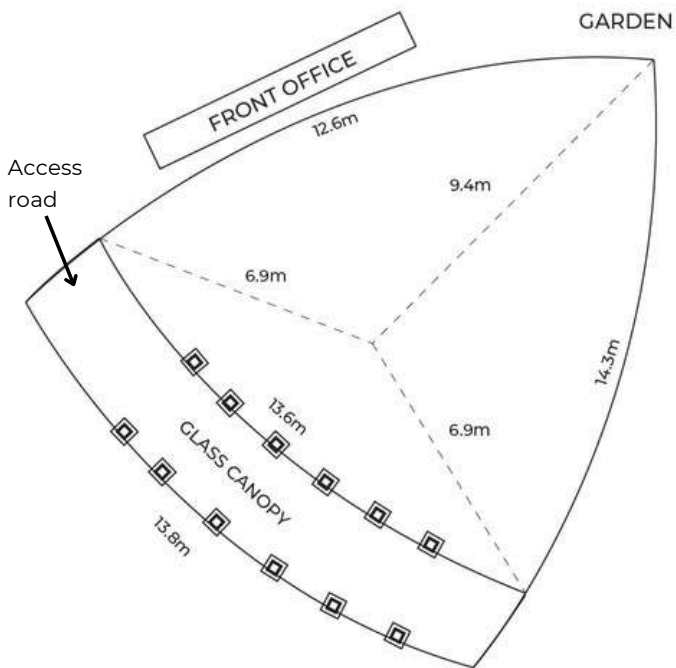
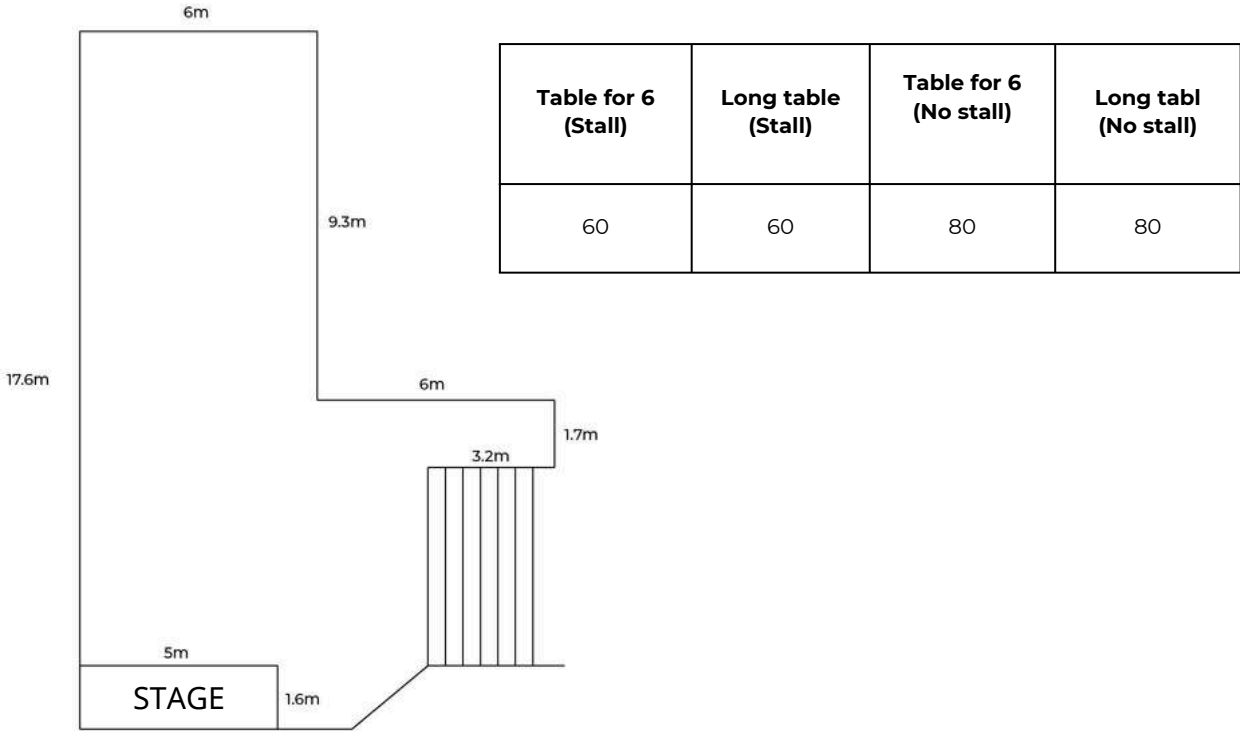
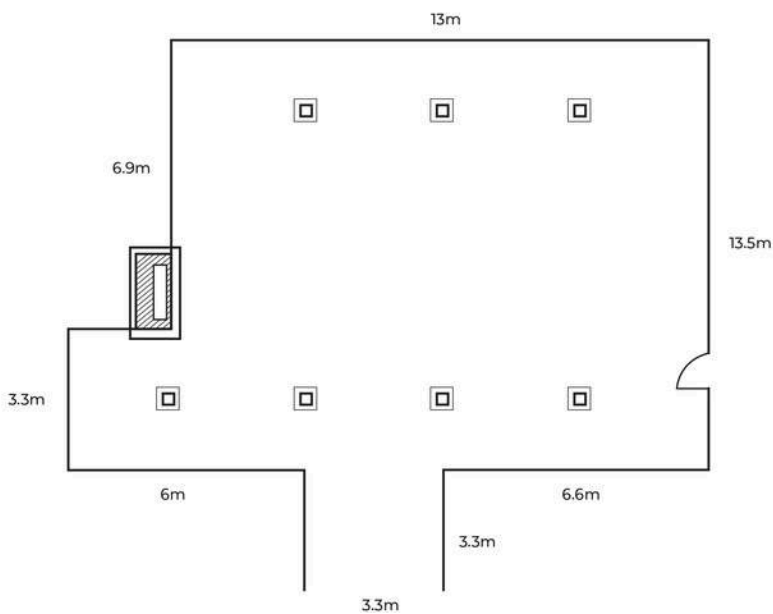


Table for 6 (Stage)	Long Table (Stage)	Table for 6 (No stage)	Long Table (No stage)
60	60	80	80



The stone court is modeled after a traditional highland market of the Northwest Vietnamese people. A BBQ buffet is served within these market stalls, with welcoming local staff attending to your needs.





Perched on the second floor of the Nest Castle service area, this restaurant exudes a vibrant local character. Its wooden roof draws inspiration from the traditional stilted houses of ethnic minorities, while the lighting system is handcrafted from vibrant brocades and hand-woven jute by the Mong and Dao people, creating a warm and inviting ambiance.

Board room (Stage)	Table for six or eight (Stage)	U Shape	Board room (No stage)	Table for six or eight (No stage)
40	60	50	60	80



TABLES AND CHAIRS

SAPA JADE HILL RESORT & SPA

<i>List</i>	<i>Quantity</i>	<i>Size</i> <i>(length*width*height)</i>
<i>Chair</i>	<i>160</i>	<i>40*40*45 cm</i>
<i>Table (square)</i>	<i>65</i>	<i>90*90*85 cm</i>





TABLEWARE

SAPA JADE HILL RESORT & SPA

Plates and bowls



<i>List</i>	<i>Colour</i>	<i>Diameter</i>
<i>Bowl</i>	brown, jade green, reddish brown	11 cm
<i>Small Plate</i>	brown, jade green	18 cm
<i>Large Plate</i>	brown, jade green	23 cm





VILLE DE MONT
MOUNTAIN RESORT

VILLE DE MONT MOUNTAIN RESORT

📍 Group 7, Sa Pa ward, Sa Pa town, Lao Cai province, Vietnam

☎ (+84) 2143 771 199 | (+84) 969 931 199

🌐 Villedemont.com

🎵 [@villedemont.sapa](https://www.tiktok.com/@villedemont.sapa)

📘 [VilleDeMontResort.Sapa](https://www.facebook.com/VilleDeMontResort.Sapa)

📷 [@villedemont](https://www.instagram.com/villedemont)



THANK YOU